

Replacement of the “Cyber” material

Update of the obsolete “Cyber” axis control by a SEW solution



Applicability

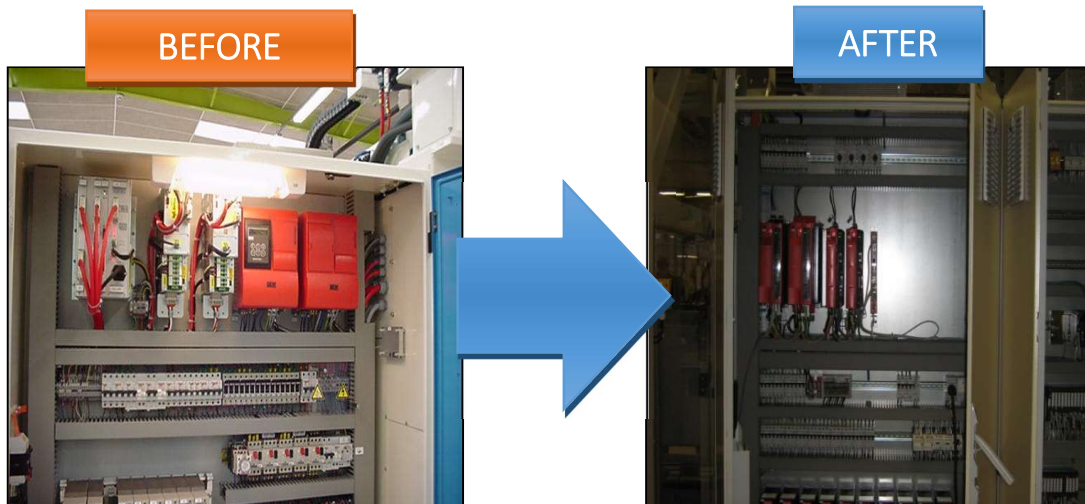
AN and SD between 1992 and 2003.

Your advantages

Productivity

- Secures the machine
- Improves performance
- Reduces maintenance costs

*Subject to detailed feasibility study for your own equipment
Contact your Service Account Manager for additional info*



No contractual picture

Technical description

- Installation of axis management latest generation system (CN, numerical inverters and servo-driving).
- Latest generation material and available spare parts
- Performance optimization
- Increase in viability and productivity
- Autonomy of maintenance staff
- Increased memory capacity enabling additional formats

Our guarantees

Spare parts covered by a warranty period of 12 months
Preservation of machine integrity
Certainty of ongoing OEM (Original Equipment Manufacturer) support
Compliance with applicable standards
Efficient after-sales service, spare parts, technical assistance
Installation by skilled technicians
Quality criteria acceptance

Conversion/delivery time & misc

Installation technical level: T4 expert (Automation Technician)
Equipment downtime: 10 days / 3 persons
Delivery lead-time: 8 weeks
Basic training included