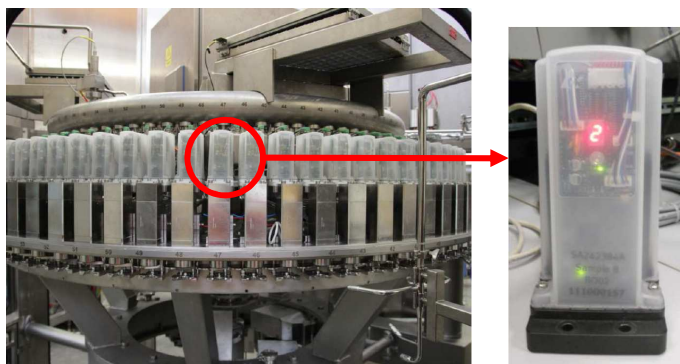


# Reduce maintenance costs

## New Slave Cards for Filling Valve

### VALUE AND BENEFITS

- Improved diagnostic (\*) ;
- Improved the control of the valve (\*) ;
- Increased functionality (\*) .



**New pilot valve, with the new Slave Card inside.**

(\*) only for conversion to the Matrix system.

### DESCRIPTION

- In the current IrDA systems (with internal or external Master Card), can occur issues for obsolescence with the Master and Slave cards and with some HMI.
- The new Matrix system, with new components and a new RS485 connection instead of the previous IrDA communication, increases functionality and improves the control of the valve.

**Current solution**



**New solution**



Value: Maintenance

Equipment: SRVE, SRSE, SRAT, SRVL, SRVU, SRVI, SRVH, SREE, SRPN, SRPS, SRPT, SRVS, SRVT, SRAS.

Catalogue code: HS123