

Obsolescence: Secure machine availability

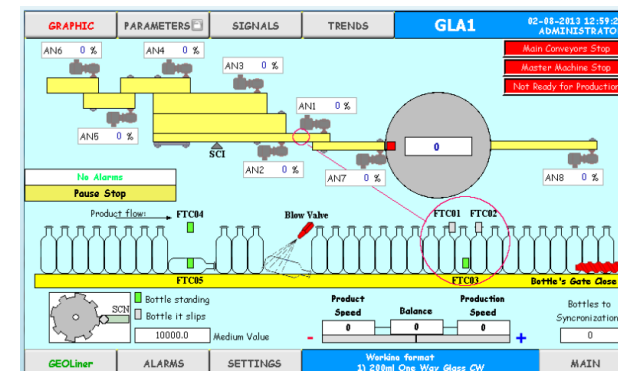
ILINER new system to manage alignment table at the inlet of the filler and labeler; and replace the obsolete STRATEC system.

Value and benefits

- **Necessary solution with newer component available in the market.**
- **Prevents long downtimes in case of failure**
 - **Stratec cards EEC388** installed on Several Conveyor control cabinet production is **stopped** by manufacturer. This is installed on a specific Conveyor control cabinet depending on Serial number
 - **Stratec card are discontinued by OEM manufacturer.**
 - Spare Part unavailability.
 - Risk of long Downtime for equipment at Bottlers production plants as it takes an upgrade to be able to install active newer components.

Description

- New system **ILINER** to manage the alignment table.
 - The new system consists of new B&R (card and HMI) and new software; that replace the Stratec software, card and display. Not need to change software configuration of the conveyor control cabinet and using the existing photocells and encoder.
 - It includes Hardware, Wiring kit, Software preparation, Technical documentation update.



Value: Obsolescence

Equipment: Simonazzi conveyor control cabinet Series ELA and ELG

Catalogue code: OCE004