

KEY FIGURES

Budget price:

3k € - 15k €

Payback estimation:

tbc

Installation time:

Min 5 days

Machine downtime:

Min 5 days

Lead time to deliver:

12 weeks on average

*These data are approximate and not definitive, depending on your machine configuration.

Machine application:

- Mixers and, depending on the case, Fillers (from Filler 2000 on, Matrix platform)

Can be bundle with:

- NA

Sterile Air Pressurization instead of CO₂

Ref. HS136

BENEFITS

- Increased sustainability: reduction of CO₂ consumption;
- Cost optimization (sterile air or N₂ are less expensive than CO₂)

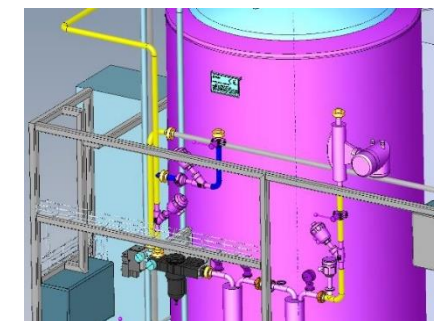
DESCRIPTION

- Scope of supply (to be confirmed at offering stage)
 - Additional piping + Pneumatic valves
 - Filtration group
 - Automation modification to control new valves
 - Electrical connections/diagram modification
- According to configuration, modifications may involve
 - Mixer only
 - Mixer and Filler
 - only Filler (skid).
- New standard sterile air filtration group must be installed in the *Starblend Plus* and *Evolution*.
Coreblend mixers could be already fitted with it.

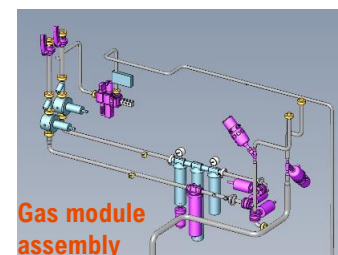
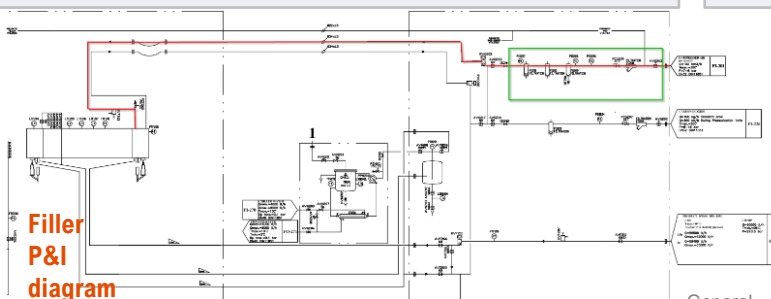
SUSTAINABILITY



Starblend plus



Starblend Evolution



Coreblend

